

Company

The EXPLINOVO team is a specialist and trusted partner for the development of complex software and hardware solutions in the field of embedded control systems. As experts in automotive communication networks, we are also developing hardware and software tools for bus systems.

Large manufacturers as well as numerous system suppliers are part of our main customers. We solve complex tasks for you and support you with the implementation of new ideas.

We offer our engineering services where they are most valuable to our clients. Either directly on site in your development team with your tools and methods or in our laboratory. Additionally, we invest our expertise in the development of programmable control units for the rapid prototyping of new features, gateway applications and remaining bus simulations.

The assets of EXPLINOVO are the broad know-how in the area of electric / electronic (E/E) systems, software development for embedded systems, field bus communication systems (FlexRay, CAN, Powerline Communication, LIN...), design of complex digital / analogue circuits as well as PCB layouts.

Our flexibility and extensive know-how satisfy our customers completely. Work with us and find out why our customers keep on coming back.

SERVICE PORTFOLIO

Services

- Automotive software engineering
- ECU development
- Development of prototypes
- Tooling
- Reengineering
- Powerline Communication



CatchTheBus

Freely programmable control unit (ECU) with FlexRay, CAN, LIN, Ethernet, RS232 and Powerline Communication interfaces

Development services

E/E system development among other things:

- Specifications with requirement engineering
- System design
- Component selection for HW and SW
- Rapid prototyping
- MISRA-C compliant coding
- PCB layout
- Driver development for microcontroller
- Real time application
- Signal processing algorithms
- Control algorithm
- Communication bus gateways
- Graphic user interface (GUI)

Test services

- Static / dynamic tests
- Preparation of test cases, test scenarios
- Test automation
- Verification / validation
- Vehicle test
- Error recording, management and elimination
- Remaining bus simulation
- Bus communication, network management
- Measurements
- Data analysis
- Physical layer analysis
- Test documentation



X-by-Wire vehicle with redundant E/E architecture

DEVELOPMENT TOOLS

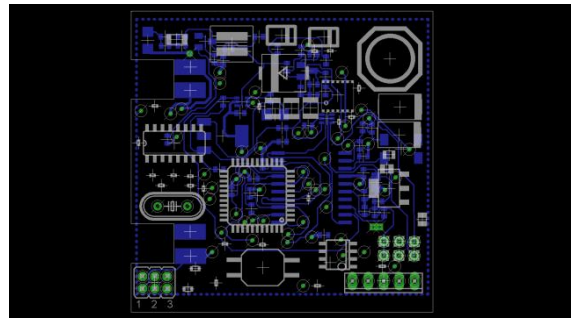
- Code Warrior
- MPLAB IDE
- Eclipse
- Tasking EDE
- MS Visual Studio .NET
- Eagle
- Matlab / Simulink
- CANoe / CANalyzer (with FlexRay)
- FlexEditor
- FlexConfig
- NoICE
- IRQA (Requirement engineering)
- QA-C (static tests & MISRA-C)
- Redmine / Jira (issue & bug tracker)

PROGRAMMING LANGUAGES

- C/C++
- Matlab / Simulink
- CAPL
- MFC

PROTOCOLS

- CAN
- FlexRay
- Powerline Communication
- LIN
- UART
- SPI
- I2C
- Ethernet



CAN to Powerline Communication gateway

CONTACT

EXPLINOVO GmbH

Schlachthofstraße 15
D-70188 Stuttgart

Tel: +49-(0)711/933 079-20

Fax: +49-(0)711/933 079-21

Email: info@explinovo.com

www.explinovo.com